

Service & workboat - MSV

Main characteristics



© BOURBON - SOCARENAM SHIPYARD – MSV

Type	Multipurpose Support Vessel - MSV
Overall length	75 m
Breadth over all	20 m
Draft	3,80 m
Speed	13,6 knots
Propulsion	Diesel - electric
Classification	Bureau Veritas – DB2

Scope of services and deliveries



Power generation & PMS



Power distribution



Automation



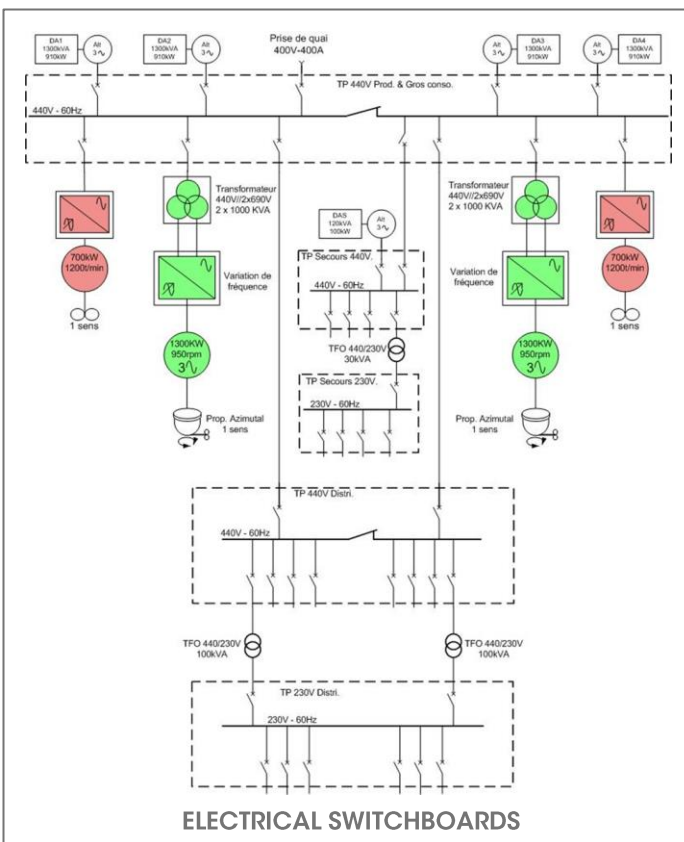
Electric & hybrid propulsion

BARILLEC marine, as global electrical contractor for Socarenam shipyard, has designed, delivered and commissioned the electrical systems onboard two MSV:

- Main and secondary switchboards
- Electrical cabinet
- Control systems, monitoring
- Control desks
- Fully integrated power management system interfaced to the electric propulsion
- Integrated navigation systems
 - Internal communications
 - Computer network
- Communication networks and distraction
 - Entertainment system
 - CCTV



Technical characteristics



- The global electrical production, propulsion and distribution systems:
 - Main switchboards, power distribution, including the fully integrated power management system for 5 gensets: 1 300kVA each
 - Transformers, frequency converters, electrical motors: 2 x 1 300 kW and 2 x 700kW
 - Propulsion management system
 - Lighting: normal/emergency/transitory
- Integrated Automation System – IAS:
 - 600 digital I/O, 30 analog I/O
 - 5 communication links - 300 I/O
- Computer network: 300 users
- Internal communication networks: talk back, telephone, public address, general alarm, sound powered telephone, order Intergraph

● Green technology ● Innovative design ● Worldwide service