

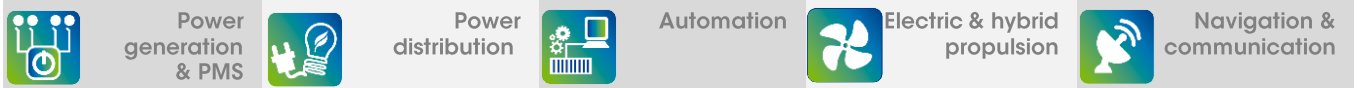
WATERWAYS – DIAMANT

Main characteristics



Overall length	60 m
Beath	10 m
Propulsion	Electric
Capacity	400 people
Classification	Bureau Veritas NI

Scope of services and deliveries

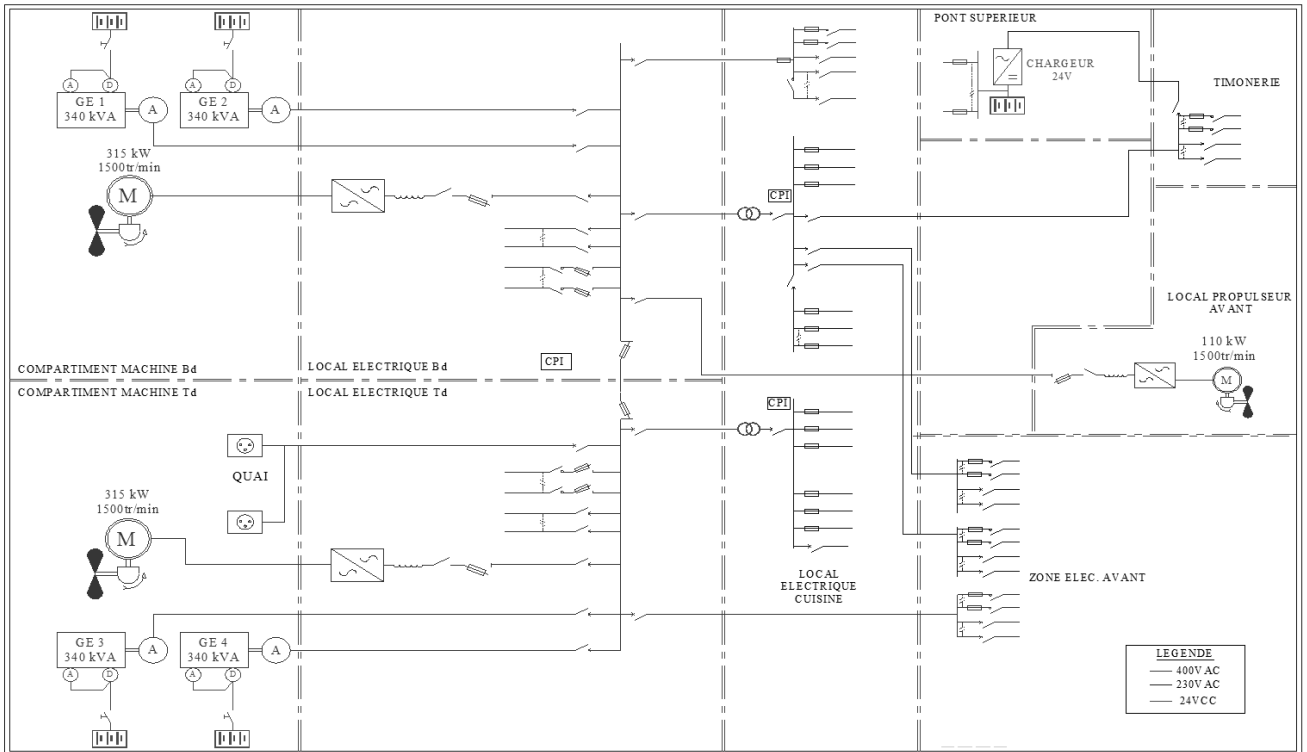


BARILLEC marine, electrical package supplier for « Bateaux Parisiens », has designed, delivered and commissioned the electrical systems onboard a Diamant

- Main and secondary switchboards
- Electrical distribution cabinets
- Control desks
- Distribution network
- Control, monitoring and supervision
- Fully integrated Power Management system interfaced to the electrical propulsion
- Internal communication and networks



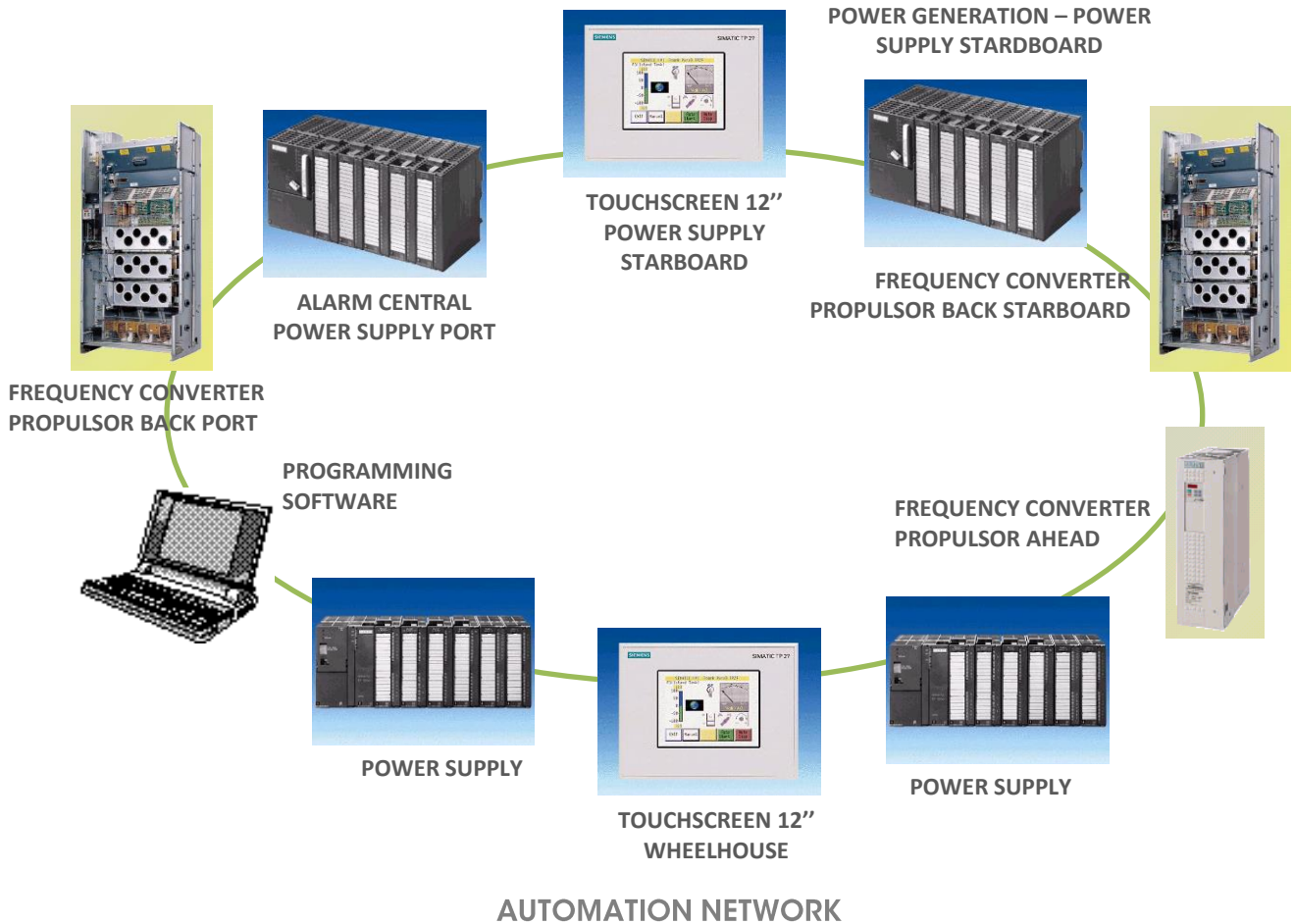
Technical characteristics



ELECTRICAL NETWORK

- Main and secondary switchboards are divided by the electrical distribution, it function fully independently thanks to 2 gensets
- Electric propulsion 2x250kW and 1x110kW : low vibration and noise, the mechanical power is installed inboard
- Monitoring from 2 supervisory positions : main motor, genset, stand-by management, various auxiliaries, electrical distribution network, enclosure, cup level, fire etc.
- Power management system: power cutoff, power limitation, optimization the generators number in operation

Technical characteristics

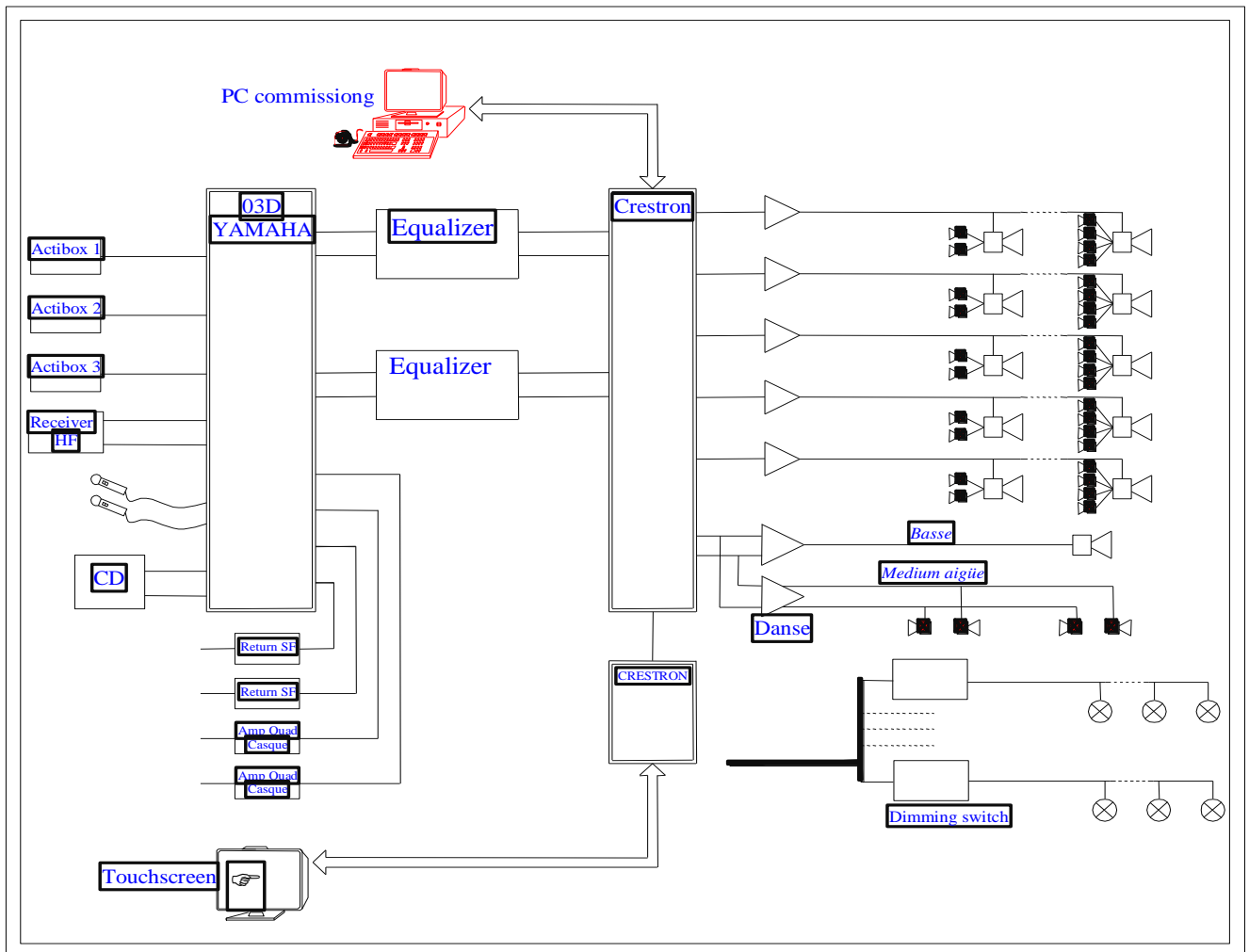


Supervisory position is located in PC machine and wheelhouse:

- Summary chart with bar-graphs and animated auxiliaries
- Alarm pages with history
- System diagnostic functions
- Setting pages : setting thresholds and timing, inhibition, ...) with limited access
- Bridge in light on deck
- Video surveillance
- Fire detector system
- Navigation equipments



Technical characteristics



SOUND SYSTEM

Sound system :

- 5kW high fidelity
- Graphical interface for managing and acoustic diffusion, automation of the digital mixer, lighting management

● Green technology ● Innovative design ● Worldwide service