

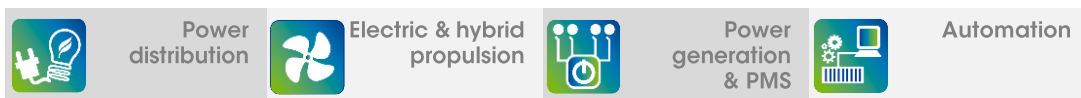
Fishing – Longliner

Main characteristics



Type	Longliner
Length over all	55 m
Breadth	11,50 m
Speed	12 knots
Type of propulsion	Diesel-electric
Classification	Bureau Veritas

Scope of services and deliveries

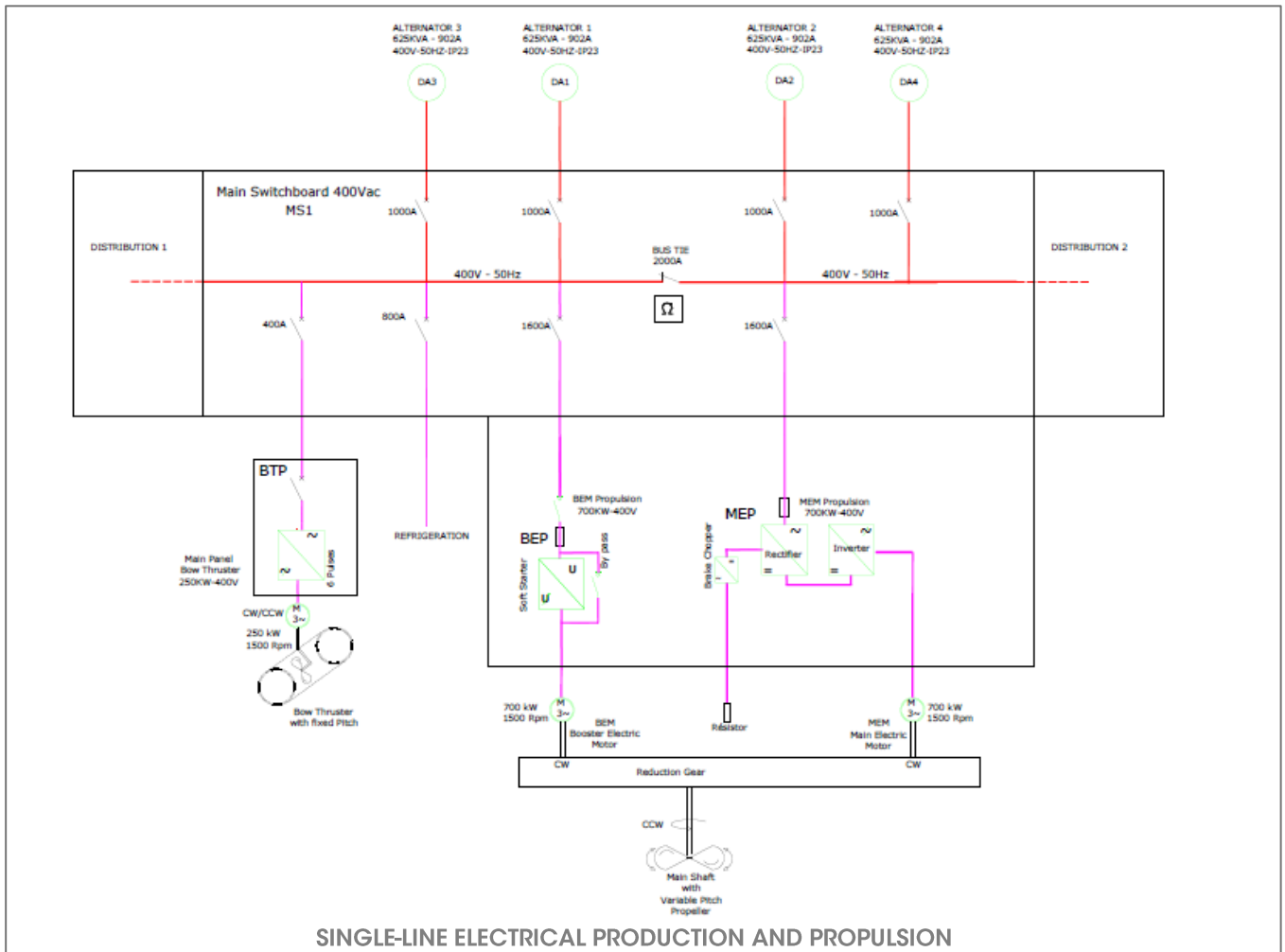


BARILLEC marine, as a global electrical contractor for Piriou shipyard, has designed, delivered and commissioned the electrical and propulsion systems onboard “Saint André”:

- **Electricity:**
 - Production, energy management and distribution
- **Propulsion:**
 - Main propulsion system
 - Bow thruster propulsion
- **Automation:**
 - Alarms and monitoring system
 - Control and monitoring system of the pitch propeller



Technical characteristics



■ Electrical:

- 4 gensets: 400 V – 50Hz – 625 kVA
- 1 shore power supply: 400 V – 50 Hz – 128 A
- 1 emergency genset: 400 V – 50 Hz – 65 kW

■ Propulsion:

- Main controllable pitch propeller driven through gearbox by:
 - 1 engine 400 V – 700 kW at variable speed
 - 1 engine 400 V – 400 kW at fixed speed: booster or emergency operation
 - 1 thruster auxiliary propulsion 400 V – 280 kW at variable speed

■ Automation:

- Platform alarm and monitoring system: 300 digital and analog I/O
- Control and monitoring system of the pitch propeller

● Green technology ● Innovative design ● Worldwide service