

## Maritime workboat - Dredger

### Main characteristics



Type	Trailing suction hopper dredger
Overall Length	85 m
Breadth over all	15,85 m
Loading capacity	2300m <sup>3</sup>
Dredging depth	40m
Propulsion	Diesel (conventional)
Classification	Bureau Veritas

### Scope of services and deliveries

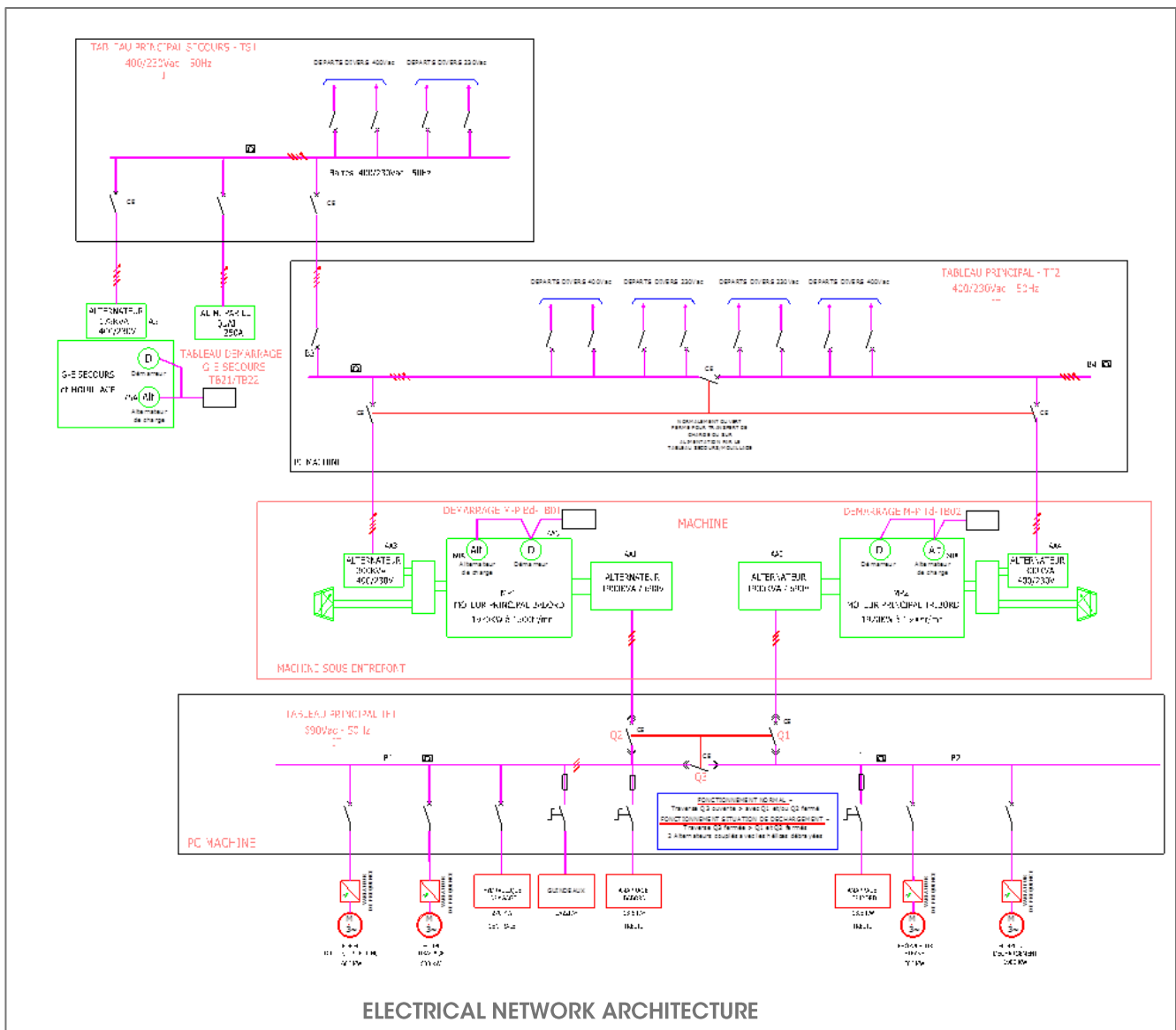


**BARILLEC marine, as global electrical contractor for PIRIOU shipyard, has designed and delivered the electrical installation and the dredging monitoring system of MICHEL DSR vessel for ship-owner Compagnie Européenne de transports de l'Atlantique - CETRA :**

- Engineering
- Main and secondary switchboards
- Electrical cabinet
- Control desks
- PMS - Power Management System
- Internal communications and data network
- Entertainment system, closed circuit television



# Technical characteristics



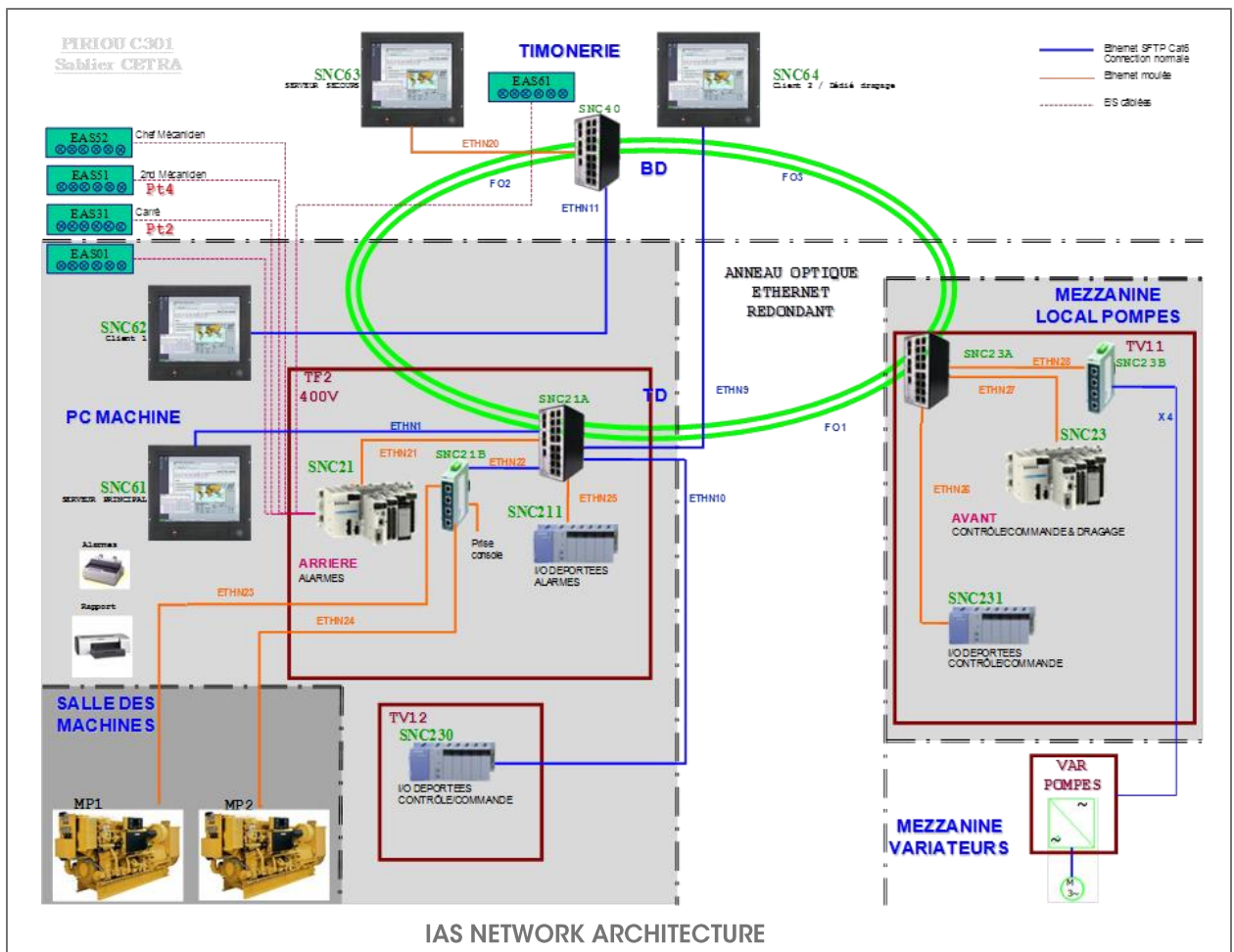
ELECTRICAL NETWORK ARCHITECTURE

## Electrical installation :

- Main and secondary switchboards
  - Power management of the 690V network supplied by two 1900KVA alternators
  - Power management of the 400V network supplied by two 300KVA alternators
- Management of two separated power networks (690V & 400V) supplied by alternators driven by the same engine shafts
- Lighting
- Electrical distribution network



# Technical characteristics



## IAS - Integrated Automation System

- Development of an integrated automation system to manage and control remote the security (ballast & bilge system) and the operational systems (dredging)
- The integrated automation system of the entire ship is designed around a high-speed optical ring to ensure perfect security in the data transmission. This security is enhanced by the physical separation of programmable logical units
  - Alarms and monitoring: 600 digital I/O, 600 analog I/O, 400 communication links
- Internal communication networks: order telegraph, general alarm, general broadcast, talk back, telephone, data network, CCTV

● Green technology      ● Innovative design      ● Worldwide service